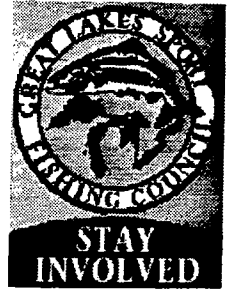




FISHIN' TALES



VOL. XIII * NO. 4 PUBLISHED BY THE DETROIT AREA STEELHEADERS, INC. APR. 1998

Capt'n Chuck TO SPEAK

MEMBER MEETING

Don't miss the April 28 member meeting. The main speaker will be Ed Stone better known as Capt'n Chuck from Ludington. The Capt'n will tell us about hot new lures and equipment and fishing in Lake Michigan. He will also tell us about his internet tackle store.

The member meeting will also be your chance to find out the best places and techniques for the Rivercrab tournament. Don't miss it!

RIVER CRAB TOURNEY

This year's River Crab Salmon Stakes Tournament takes place on May 2. The River Crab is the second tournament on our club schedule. The tournament starts on the water, dropping lines at 6a.m. Lines need to be pulled at 1p.m. and you must be in line at the Rivercrab at 3 p.m. to weigh-in. Be sure to weigh in any legal salmon you catch. Remember, if you have more than one lake trout at weigh-in, you will be disqualified.

The Bluewater Mental Health and Child Guidance Clinic of Port Huron and seven other Michigan agencies benefited from the tournament last year.

Again this year, there is a \$5,000 prize for the club with the heaviest catch. The Board of Directors would like to see all of our club members try to participate in this tournament. As an incentive, anyone who weighs in a fish will be eligible for a \$100 cash

drawing. There will be five prizes if we win and one if we don't. In addition, the Board has voted to donate a portion of any winnings to the new Sanilac fish cleaning station.

Let's make this tournament the number one tournament on your schedule and help the club win the \$5,000.

Entry tickets (\$10) and dinner tickets (\$13) should be available at the meeting. If you have any further questions regarding the River Crab, contact Don Redmond (810) 469-8344 or Chris Nytko (810) 254-7426 or use Chris's pager at (810) 609-6280.

DON'T FORGET TO RENEW YOUR FISHING LICENSE!!!

WEB SITE

The Detroit Area Steelheaders are now on the WWW. The URL (address) is:
<http://great-lakes.org/mi/detroitsteelheaders>

Let us know what you think of the page. It has a few great links to other sites including the Great Lakes Sportfishing Councils home page. E-mail me at: Sed970@aol.com

If you have a page on the web you want to announce to the club e-mail the URL to me. I'll try to get the information in a future 'FISHING TALES'. Ed Wilczek

SPECIAL DATES

Member Meeting Apr 28
Member Meeting May 26

BOAT TOURNAMENTS

Lexington April 25
River Crab May 2
Grand Haven May 16
Ft Austin May 30
Special People June 13
Oscoda Ladies Day
June 27
Pt Austin Walleye
July 25
Presque Isle August 1
Ludington August 15
Manistee August 29
Harbor Beach Sept. 12

PLEASE CHECK YOUR LABEL FOR YOUR MEMBERSHIP EXPIRATION. Skippers must be a member for their boat to qualify in the River Crab.



Table 6.—Catch rates (fish per 100 angler hours) by charter anglers for salmonines on Lakes Michigan, Huron and Superior during 1990-97.

Species	Michigan								Huron								Superior							
	1990	1991	1992	1993	1994	1995	1996	1997	1990	1991	1992	1993	1994	1995	1996	1997	1990	1991	1992	1993	1994	1995	1996	1997
Coho salmon	3.9	2.8	3.4	4.5	2.6	2.2	2.9	3.8	0.2	0.2	0.2	0.3	0.3	0.1	0.4	0.3	1.2	3.2	1.3	1.0	1.6	1.7	1.9	1.1
Chinook salmon	7.4	7.0	4.9	4.0	4.0	5.0	9.0	9.6	6.0	6.4	6.4	7.2	8.3	11.7	11.8	18.5	0.3	0.4	0.3	0.3	0.1	0.2	0.3	0.2
Rainbow trout	4.0	7.2	6.5	5.0	5.2	3.0	6.3	4.7	0.3	0.6	0.7	1.4	1.3	2.6	2.6	2.0	0.3	0.3	0.1	0.2	0.3	0.3	0.3	0.3
Brown trout	0.6	0.8	0.4	0.7	1.1	0.7	1.1	1.5	0.1	0.2	0.7	1.7	2.1	1.9	0.8	0.4	0.1	0.2	0.1	0.0	0.1	<0.1	<0.1	<0.1
Lake trout	8.4	8.7	7.6	9.7	10.4	10.2	7.5	7.2	9.8	7.9	6.6	4.3	6.3	6.6	9.4	9.8	28.5	27.9	25.5	28.2	25.3	26.2	28.5	26.7

Table 7.—Catch rates (fish per 100 angler hours) by charter anglers for yellow perch and walleye on Lakes Huron, St. Clair and Erie during 1990-97.

Species	Huron							St. Clair							Erie									
	1990	1991	1992	1993	1994	1995	1996	1997	1990	1991	1992	1993	1994	1995	1996	1997	1990	1991	1992	1993	1994	1995	1996	1997
Yellow perch	9.2	7.4	6.3	4.0	4.9	3.7	2.8	1.6	13.8	16.8	15.1	40.4	85.5	66.9	100.3	103.8	29.4	34.1	43.3	43.9	28.7	51.7	78.4	74.2
Walleye	5.1	7.1	6.7	7.4	6.7	3.5	3.4	3.0	32.4	20.4	12.5	18.4	12.3	15.5	13.2	12.3	74.5	62.8	78.5	81.4	69.6	82.4	82.2	83.6

DAS GRAND HAVEN TOURNEY

Going Back to Grand Haven
By Paul Colone(The Kidd).

It is set; we are going back to Grand Haven, Michigan on the West Coast of the State, (Lake Michigan), on May 16th, 1998.

Now, I was not a member the last time the Club went to Grand Haven. Heck, I was barley out of High School.

The last time the club fished Grand Haven, there was an unfortunate misunderstanding. Anyway, no Tomfoolery is going to happen this time, O.K. We all have to remember that we are guests in all of the ports we fish and we represent the Detroit Steelheaders. Let's leave a reputation as being great guests and great fishermen. (Like many things, a few bad apples can spoil it for us all.)

I am excited about this trip because of the fishing there the last two years; particularly in the spring and the fall.

Over the last two springs, (May being the hottest), the fishing has been red hot. Furthermore, the Grand Haven Port has led the charge in most King Salmon taken two years in a row! I squawked when a tournament for the Port was mentioned. After that, I was elected Port Capt..

I do not know what the program will be at the Port, but, we will know more as the date approaches. If not, we are all "Big water vets", and finding out the program will be no problem.

The Port itself is a vacation destination for people all across Michigan. It offers a ton of things to do, for everyone! The Downtown area is beautiful; full of shops, restaurants, and bars. I

have some fond memories, although some blurred, of frequenting Tip-a-Few, The Kirby Grill and The Rosebud Tavern and enjoying an adult beverage or two. The Musical Fountain will be in operation starting on Sat the 16th at approx. 9:30 PM located at the Waterfront Stadium. The Great Lakes Sport Kite Championships will be taking place at the Grand Haven State Park May 16th -18th. There are plenty of accommodations around town including Hotels, Motels, Campgrounds, and plenty of Marinas.

The Grand Haven State run Marina is located on the Grand River two

CHECK YOUR MAILING LABEL TO SEE WHEN YOUR MEMBERSHIP EXPIRES. IF IT HAS A YELLOW MARK YOU NEED TO SIGN UP!

blocks from the Downtown and a short walk to Chinook Pier. The Marina Ph# is (616) 847-3478, according to a friend from G.H., the Marina will not be full at this time of the year. It may also be a good idea to call the G.H. Chamber of commerce at (616) 842-4910 or (616) 842-4499 or (800) 303-4096 for a complete listing of all the services available in the area. I will have map to the launch, Marina and Park along with the times and details about the Tournament at the April meeting.

Do some research, check the reports, visit the web sites, be ready for some great fishing and make the date for Grand Haven on May 16th, 1998. The Detroit Area Steelheaders are going to rock and roll doing the Salmon dance boogie in G.H.!!! If you have any questions feel free to

call me, Paul Colone, (The Kidd, Port Capt. G.H.), at (248) 547-0004.

FISHIN' TALES is published monthly by THE DETROIT AREA STEELHEADERS, INC.

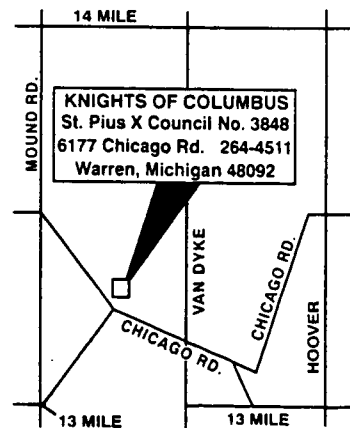
Views expressed in it are those of the authors, and the Editor. Its purpose is to inform members of issues and events affecting sport fishermen, and to teach and guide the public to respect and appreciate our Great Lakes, rivers, others waters and lands.

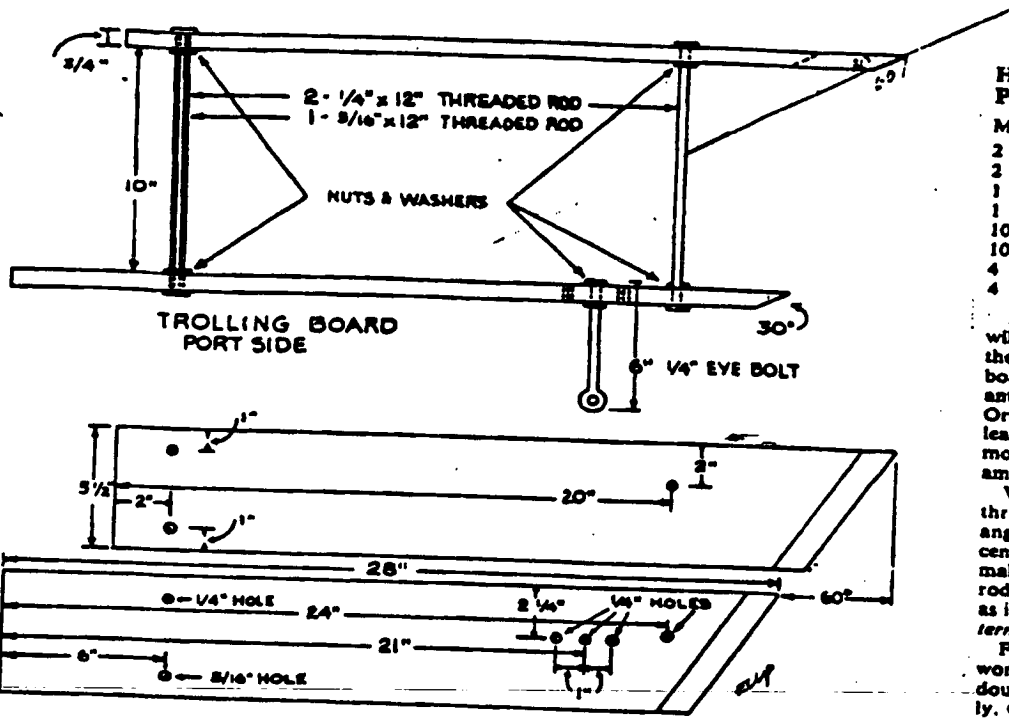
Material published in FISHIN' TALES may be reprinted. Give proper credit to the author, and to FISHIN' TALES as source of the material. Send a complete copy of the publication which includes the reprint to the Editor when published.

FISHIN' TALES STAFF

Editor.....BOB MITCHELL
Photographer.....CHRIS NYTKO
Advertising.....BOB MITCHELL

Here's how to get to DETROIT AREA STEELHEADER Monthly Membership Meetings





How to Build the Double Planer Board

- Materials per board
- 2 - pcs 1" x 6" x 28" Redwood
 - 2 - pcs 12" x 1/4" Threaded Rod
 - 1 - pcs 12" x 1/16" Threaded Rod
 - 1 - pcs 1/4" x 6" Eye Bolt
 - 10 - pcs 1/4" Washers
 - 10 - pcs 1/4" Nuts
 - 4 - pcs 1/16" Washers
 - 4 - pcs 1/16" Nuts

In addition to the materials above, one will need a hand saw, wood rasp to form the 30 degree angle on the face of the boards, a 1/4" and 1/16" wrench, wood sealant, highly visible paint (International Orange or white are good choices), and at least 100 feet of tether line — 80 lb. test monofilament or 200-pound test small diameter braided nylon work well.

When assembling the boards, keep these three points in mind: 1) cut or rasp the 30 angle on the front of each planer; 2) the center hole of the three eye bolt holes is normally the best; and 3) the bottom 1/16 inch rod not only strengthens the board but acts as its keel. Remember, too, reverse the pattern to make the starboard planer.

For those who would rather leave the work to someone else there are many fine double planer boards available commercially. Check the many advertised in the pages of this magazine.

Make Your Own Planer Boards

Planer boards are one of the most handy things you can have for Spring salmon fishing. They allow you to spread you lines out and get them away from the boat. In fact, when the fish hear your boat coming they often move off to the side. The purpose of the planers is to put your lures right in front of those fish. They are also standard fare for walleye trolling.

Of course, you could spend a C-note and buy some really nice plastic planer boards. It is very easy to make your own. Some guys make them out of scrap pine and then paint them yellow so you and other boats can see them. A better alternative is to start with a piece of redwood. It is much lighter and you won't need to paint it. (You will want to put a couple of little flags on the top to warn other boats to not come close.)

Detroit Area Steelheaders, Inc.
P.O. Box 1255
Sterling Heights, MI 48311-1255

Address Correction Requested



MEETING NOTICE — PLEASE DO NOT DELAY!



PLEASE CHECK YOUR LABEL FOR
YOUR MEMBERSHIP EXPIRATION.

Thanks to Mike C. for the DNR
data!